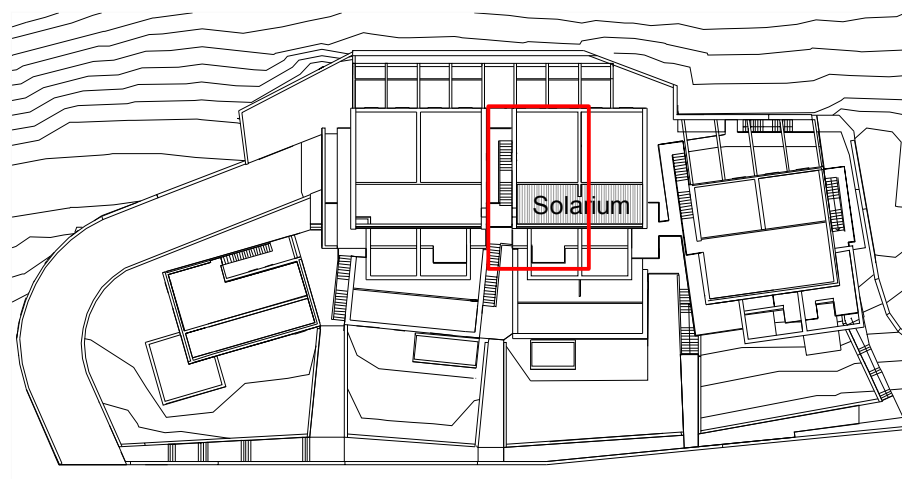




Sarnico  
Lago d'Iseo

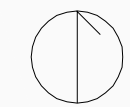
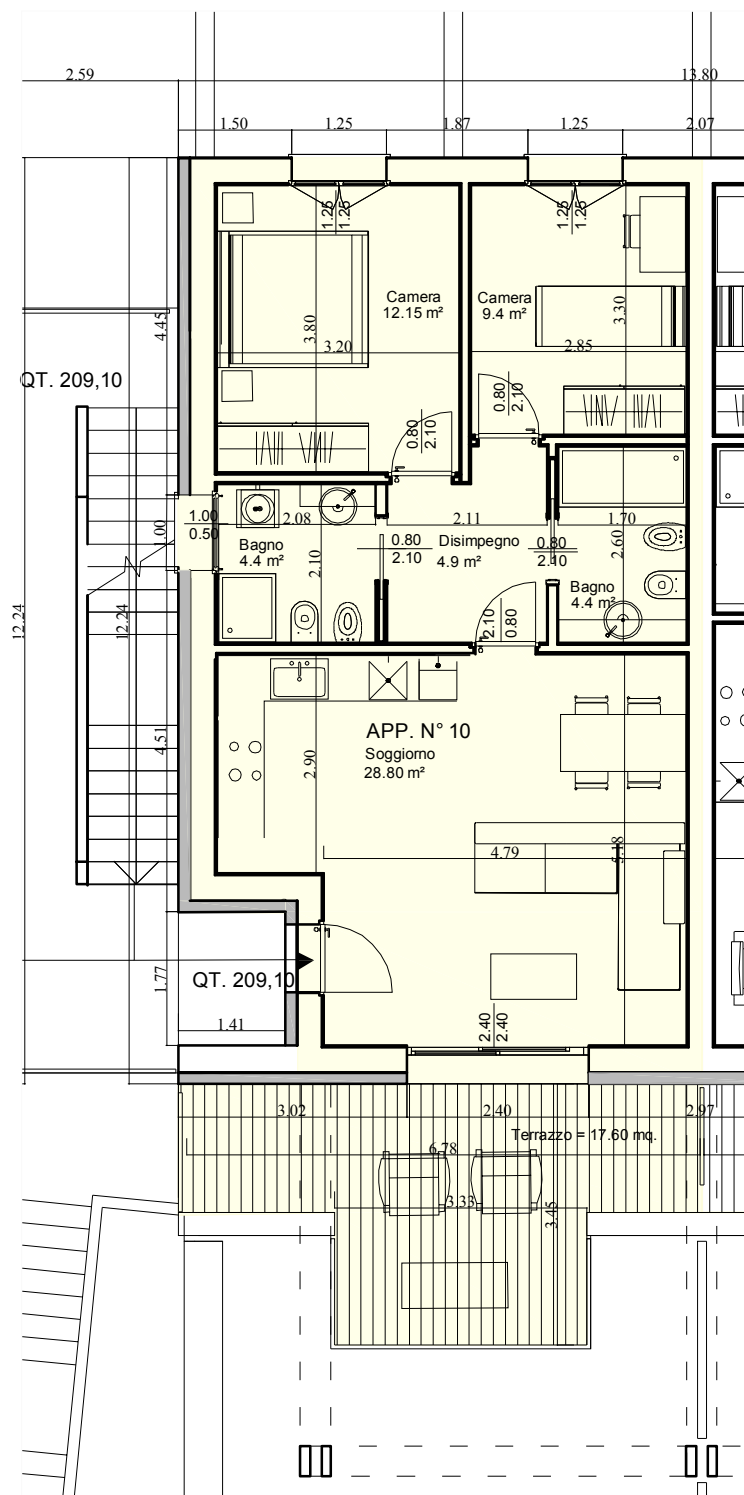
**LOTTO N°1\_APPARTAMENTO N°10\_piano primo**  
Qt. 209,10



**SUPERFICIE LORDA** = mq. 81,00 +  
**TERRAZZO FRONTE LAGO** = mq. 17,60 + mq. 50,50 (solarium)

Terrazzi fronte lago e Solarium - ai fini commerciali calcolati a 1/2  
Terrazzi lato nord - ai fini commerciali calcolati a 1/3  
Giardino - ai fini commerciali calcolati a 1/10

RESIDENZE  
**NETTUNO**  
*abitare il lago*



Pianta  
scala 1:100