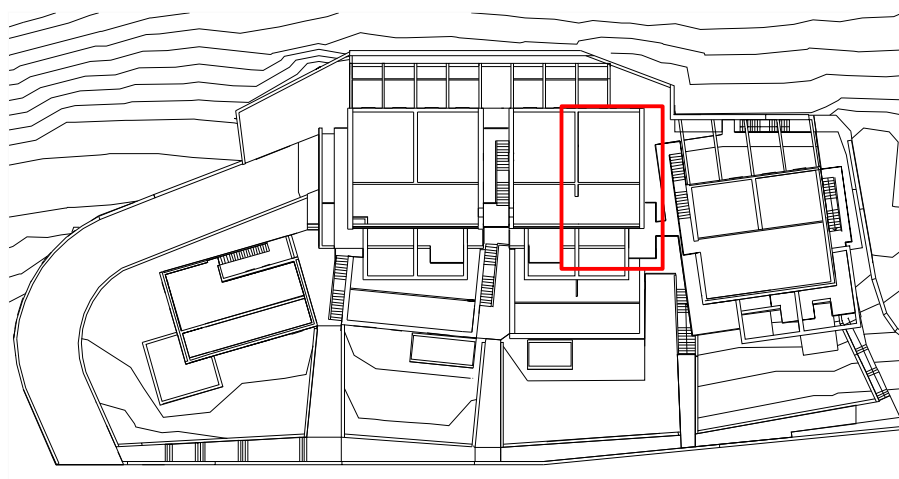




Sarnico
Lago d'Iseo

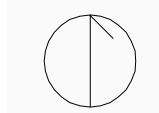
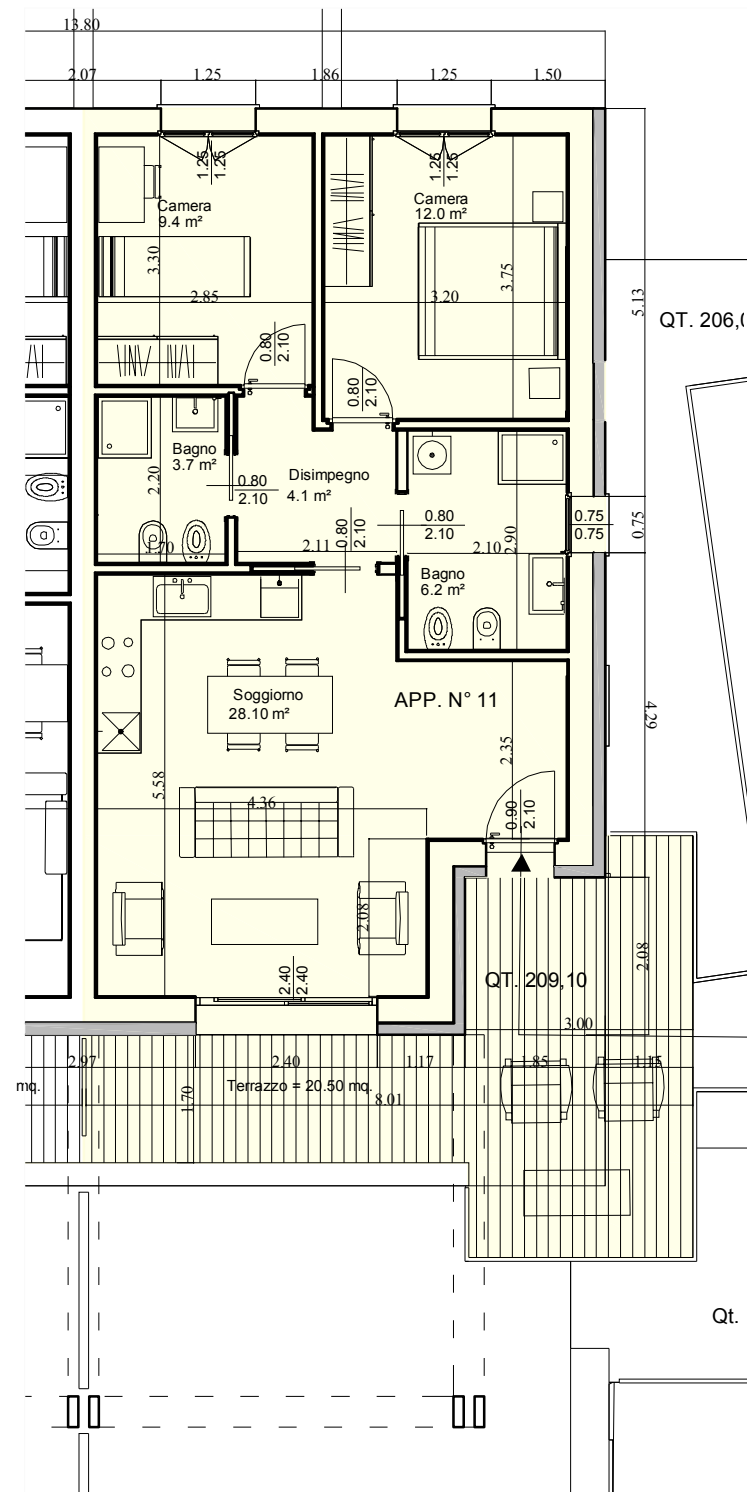
LOTTO N°1_APPARTAMENTO N°11_piano primo
Qt. 209,10



SUPERFICIE LORDA = mq. 80,50 +
TERRAZZO FRONTE LAGO = mq. 20,50 +

Terrazzi fronte lago e Solarium - ai fini commerciali calcolati a 1/2
Terrazzi lato nord - ai fini commerciali calcolati a 1/3
Giardino - ai fini commerciali calcolati a 1/10

RESIDENZE
NETTUNO
abitare il lago



Pianta
scala 1:100